

**PPP2R2C Antibody (Center)**  
**Purified Rabbit Polyclonal Antibody (Pab)**  
**Catalog # AP20942a**

**Specification**

---

**PPP2R2C Antibody (Center) - Product Information**

Application	WB,E
Primary Accession	<a href="#">Q9Y2T4</a>
Other Accession	<a href="#">P97888</a> , <a href="#">P50410</a> , <a href="#">Q8BG02</a> , <a href="#">Q95LP0</a> , <a href="#">A1L3L9</a>
Reactivity	Human
Predicted	Xenopus, Monkey, Mouse, Rabbit, Rat
Host	Rabbit
Clonality	Polyclonal
Isotype	Rabbit IgG
Calculated MW	51515
Antigen Region	258-291

**PPP2R2C Antibody (Center) - Additional Information**

**Gene ID** 5522

**Other Names**

Serine/threonine-protein phosphatase 2A 55 kDa regulatory subunit B gamma isoform, IMYPNO1, PP2A subunit B isoform B55-gamma, PP2A subunit B isoform PR55-gamma, PP2A subunit B isoform R2-gamma, PP2A subunit B isoform gamma, PPP2R2C

**Target/Specificity**

This PPP2R2C antibody is generated from a rabbit immunized with a KLH conjugated synthetic peptide between 258-291 amino acids from the Central region of human PPP2R2C.

**Dilution**

WB~~1:1000

E~~Use at an assay dependent concentration.

**Format**

Purified polyclonal antibody supplied in PBS with 0.09% (W/V) sodium azide. This antibody is purified through a protein A column, followed by peptide affinity purification.

**Storage**

Maintain refrigerated at 2-8°C for up to 2 weeks. For long term storage store at -20°C in small aliquots to prevent freeze-thaw cycles.

**Precautions**

PPP2R2C Antibody (Center) is for research use only and not for use in diagnostic or therapeutic procedures.

**PPP2R2C Antibody (Center) - Protein Information**

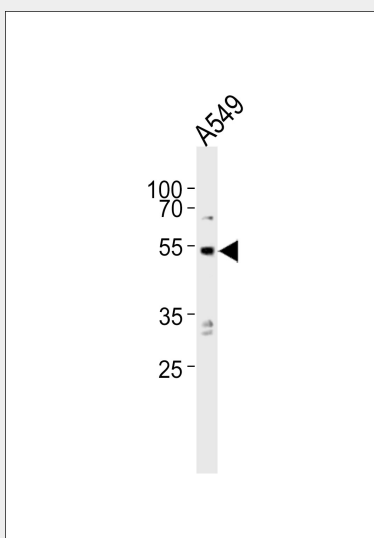
**Name** PPP2R2C

**Function** The B regulatory subunit might modulate substrate selectivity and catalytic activity, and also might direct the localization of the catalytic enzyme to a particular subcellular compartment.

**PPP2R2C Antibody (Center) - Protocols**

Provided below are standard protocols that you may find useful for product applications.

- [Western Blot](#)
- [Blocking Peptides](#)
- [Dot Blot](#)
- [Immunohistochemistry](#)
- [Immunofluorescence](#)
- [Immunoprecipitation](#)
- [Flow Cytometry](#)
- [Cell Culture](#)

**PPP2R2C Antibody (Center) - Images**

Western blot analysis of lysate from A549 cell line, using PPP2R2C Antibody (Center)(Cat. #AP20942a). AP20942a was diluted at 1:1000. A goat anti-rabbit IgG H&L(HRP) at 1:10000 dilution was used as the secondary antibody. Lysate at 20ug.

**PPP2R2C Antibody (Center) - Background**

The B regulatory subunit might modulate substrate selectivity and catalytic activity, and also might direct the localization of the catalytic enzyme to a particular subcellular compartment.

**PPP2R2C Antibody (Center) - References**

- Torres R.,et al.DNA Res. 6:323-327(1999).  
Hu P.,et al.Genomics 67:83-86(2000).  
Yu L.,et al.Submitted (APR-1999) to the EMBL/GenBank/DDBJ databases.  
Ota T.,et al.Nat. Genet. 36:40-45(2004).  
Hillier L.W.,et al.Nature 434:724-731(2005).